

## Documentation Power supply

### Three-phase AC/DC power supply 24 VDC

Art.no: **52 481 16**

Non stabilized, smoothed AC/DC power supply for 24VDC

Primary voltage: 3x380-400 VAC

Frequency: 50-60 Hz

Secondary voltage: No load      27 VDC  
80% load      24 VDC

Secondary current: 25 A

Ripple level: 1,2% (0,55VPP)

ta: 40°C (maximum ambient temperature)

Losses: Po 20 W , PI 80 W

Used components are UL-approved

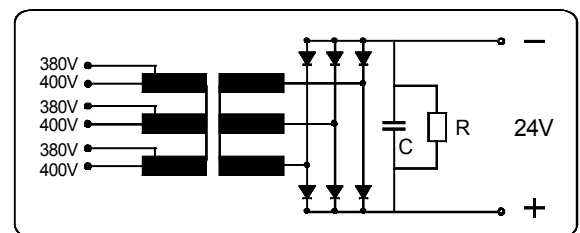
**Standards: EN 61558-2-6, EN 50081-2, EN 50082-2**

Manufactured by TRAMO-ETV AB , SE-241 92 ESLÖV

Type:

**TLOTK-25**

Connecting diagram



A: 215 mm  
B: 208 mm  
C: 235 mm  
D: 203 mm  
E: 140 mm  
F: 175 mm

Weight: 12,9 kg