

Documentation Power supply

Single-phase AC/DC power supply 12 VDC

Art.no: **1200-2599**

Non stabilized, smoothed AC/DC power supply for 12 VDC

Primary voltage: 0-220-230-240 VAC

Frequency: 50-60 Hz

Secondary voltage: No load 14,3 VDC
80% load 12 VDC

Secondary current: 10 A

Ripple level: 8% (1,9VPP)

ta: 40°C (maximum ambient temperature)

Losses: Po 8,5 W , PI 46 W

Used components are UL-approved

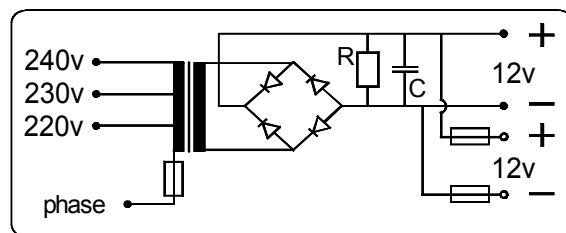
Standards: EN 61558-2-6, EN 50081-2, EN 50082-2

Manufactured by TRAMO-ETV AB , SE-241 92 ESLÖV

Type:

LOTK-1012

Connecting diagram



A: 200 mm
B: 100 mm
C: 140 mm
D: 155 mm
E: 147 mm
F: 80 mm

Weight: 4,3 kg

