

## Documentation Power supply

### Single-phase AC/DC power supply 12 VDC

Art.no: **1200-2597**

Non stabilized, smoothed AC/DC power supply for 12 VDC

Primary voltage: 0-220-230-240 VAC

Frequency: 50-60 Hz

Secondary voltage: No load 14,3 VDC  
80% load 12 VDC

Secondary current: 2 A

Ripple level: 10% (2,4VPP)

ta: 40°C (maximum ambient temperature)

Losses: Po 4,7 W , PI 12,5 W

Used components are UL-approved

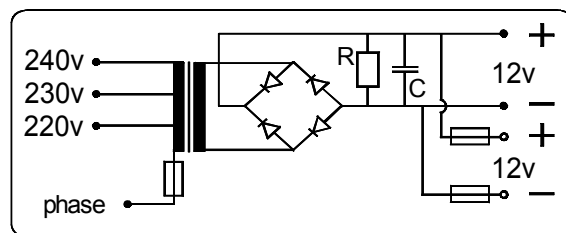
**Standards: EN 61558-2-6, EN 50081-2, EN 50082-2**

Manufactured by TRAMO-ETV AB , SE-241 92 ESLÖV

Type:

**LOTK-212**

Connecting diagram



- A: 95 mm
- B: 80 mm
- C: 97 mm
- D: 83 mm
- E: 76 mm
- F: 40 mm

Weight: 1,1 kg

