

Documentation Power supply

Single-phase AC/DC power supply 24 VDC

Art.no: **52 481 20**

Non stabilized, smoothed AC/DC power supply for 24VDC

Primary voltage: $\pm 15-230-400$ VAC

Frequency: 50-60 Hz

Secondary voltage: No load 27,5 VDC
80% load 24 VDC

Secondary current: 2,5 A

Ripple level: <7% (3,3VPP)

ta: 40°C (maximum ambient temperature)

Losses: Po 8 W , PI 14 W

Used components are UL-approved

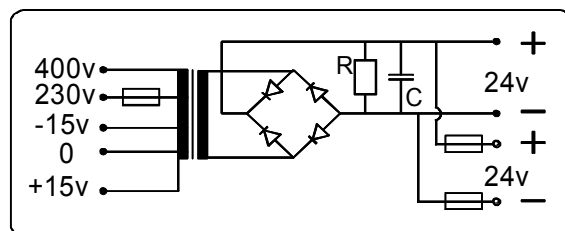
Standards: EN 61558-2-6, EN 50081-2, EN 50082-2

Manufactured by TRAMO-ETV AB , SE-241 92 ESLÖV

Type:

LOTKU-2,5

Connecting diagram



- A: 155 mm
- B: 80 mm
- C: 110 mm
- D: 123 mm
- E: 113 mm
- F: 63 mm

Weight: 2,4 kg

